

FOCUS ON THE HEART OF YOUR HOME

FIRE SURROUNDS, STOVE SURROUNDS
& ELECTRIC SUITES

WE FOCUS ON CRAFTSMANSHIP. YOU FOCUS ON YOUR STYLE.



For over 35 years Focus Fireplaces has been a company driven by a passion for designing and creating products for the fireplace industry. All of our products are manufactured using premium, responsibly sourced timbers and materials in a purpose-built factory in York.

Our experienced and highly skilled team are dedicated to the delivery of excellence; from the finest quality products to the best possible customer service, we take pride in maintaining our market-leading reputation.

As each product is individually made for each customer, we have the capability to alter or amend our designs to suit your specific requirements, therefore offering a fully made-to-measure service.

We have a policy of only selling our fireplace products through appointed retailers, installers and tradespeople to ensure that customers receive the best possible service, advice and technical assistance.

Visit our website www.focusfireplaces.co.uk to explore our full range of Fire Surrounds, Stove Surrounds, Mantel Beams and Electric Suites.

CONTENTS

01 PRESTIGE COLLECTION

- 07 Charlotte
- 07 Emily
- 08 Emmerdale
- 09 Harewood
- 09 Janine
- 10 Jennifer
- 10 Olivia
- 11 Kensington
- 12 Palma
- 13 Kingston
- 13 Toni
- 14 Vectra
- 14 Richmond
- 15 Paris
- 16 Weymouth
- 16 Windermere

02 HERITAGE COLLECTION

- 19 Annabel
- 19 Dalton
- 20 Denbigh
- 20 Derry
- 21 Malham
- 22 Durham
- 23 Justine
- 23 Linden
- 24 Dublin
- 24 Matlock
- 25 Sophie

03 CLASSIC COLLECTION

- 27 Caroline
- 27 Cotswold Rose
- 28 Sydney
- 29 James
- 29 Penny
- 30 Poppy
- 30 Plymton
- 31 Wilmslow

04 STOVE COLLECTION

- 33 Barkston
- 33 Barlby
- 34 Beamish
- 35 Leicester
- 35 Lichfield
- 36 Plain Corbel
- 36 Gatsby
- 37 Blaydon
- 38 Montreal
- 39 Sutton

05 INSET ELECTRIC COLLECTION

- 43 Camberley
- 43 Harrow
- 44 Danielle
- 45 Monaco
- 45 Vienna

06 PANORAMIC ELECTRIC COLLECTION

- 47 Colorado
- 47 Texas
- 48 Arizona
- 49 Montana
- 49 Nevada
- 50 Chicago
- 51 Madison
- 51 Houston
- 52 Vista
- 52 Vermont
- 52 Shelburn



Proud to design and manufacture in Great Britain

COVER IMAGE:
Janine Fire Surround finished in 'Pippy' Oak

YOUR FIREPLACE YOUR STYLE



Focus make Fire Surrounds, Stove Surrounds and Electric Suites to meet your aesthetic requirements.

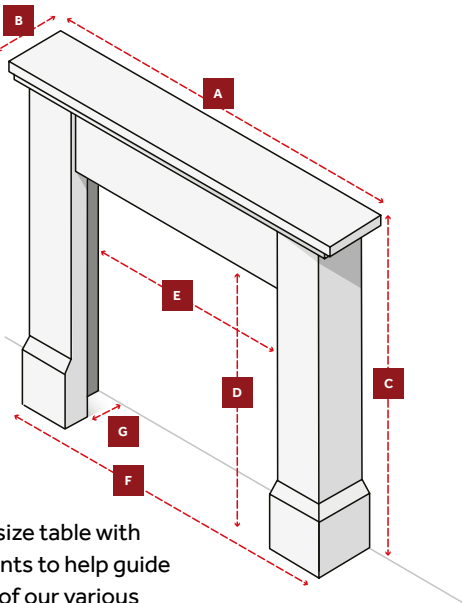
The table opposite illustrates the wide range of finishes available, from Kiln-dried and Air-dried Solid Oak, to Canadian Pine and Wooden veneers. You can also choose from our wide palette of Paint finishes, use our Colour-Matching Service, or simply have a medium density fibreboard Fire Surround painted in a prime white finish ready for you to finish yourself at home.

Real timber and veneers have a wide variety of natural grain markings which add to the beauty, individuality and presence of the fireplace, so whilst our images represent the final products, no two surrounds will ever be identical – your fireplace will be as unique as your home and your style.

Your selected appliance/fire will also determine which kind of product is suitable for your installation, therefore we recommend consulting with your local retail fireplace and stove specialist, a list of our partners can be found at www.focusfireplaces.co.uk/find-a-stockist

GUIDE TO OUR DIMENSION TABLES

| | |
|---|-----------------|
| A | Mantel |
| B | Mantel Depth |
| C | Surround Height |
| D | Opening Height |
| E | Opening Width |
| F | Width at Base |
| G | Rebate |



Each product includes a simple size table with Metric and Imperial measurements to help guide you through the Standard sizes of our various Collections. Whilst these dimensions are designed to help with your selection it must be noted that any of the products that feature in this catalogue can be adapted to suit your specific requirements, please consult with your retailer for further information.

| FINISH GUIDE | | Standard Paint Finishes on MDF | | | | | | | | | | Premium Colour Matched Paint Finishes on MDF | | Painted MDF Surround with Oak Mantel | | Solid Oak | | Textured Oak* | | Canadian Pine | | Veneer | | Pippy Oak | | Optional MDF Back & Hearth (See P40) | |
|---------------------|---------------|--------------------------------|--|--|--|--|--|--|--|--|--|--|--|--------------------------------------|--|-----------|--|---------------|--|---------------|--|--------|--|-----------|--|--------------------------------------|--|
| PRESTIGE COLLECTION | | | | | | | | | | | | | | | | | | | | | | | | | | | |
| 07 | Charlotte | | | | | | | | | | | | | | | | | | | | | | | | | | |
| 07 | Emily | | | | | | | | | | | | | | | | | | | | | | | | | | |
| 08 | Emmerdale | | | | | | | | | | | | | | | | | | | | | | | | | | |
| 09 | Harewood | | | | | | | | | | | | | | | | | | | | | | | | | | |
| 09 | Janine | | | | | | | | | | | | | | | | | | | | | | | | | | |
| 10 | Jennifer | | | | | | | | | | | | | | | | | | | | | | | | | | |
| 10 | Olivia | | | | | | | | | | | | | | | | | | | | | | | | | | |
| 11 | Kensington | | | | | | | | | | | | | | | | | | | | | | | | | | |
| 12 | Palma | | | | | | | | | | | | | | | | | | | | | | | | | | |
| 13 | Kingston | | | | | | | | | | | | | | | | | | | | | | | | | | |
| 13 | Toni | | | | | | | | | | | | | | | | | | | | | | | | | | |
| 14 | Vectra | | | | | | | | | | | | | | | | | | | | | | | | | | |
| 14 | Richmond | | | | | | | | | | | | | | | | | | | | | | | | | | |
| 15 | Paris | | | | | | | | | | | | | | | | | | | | | | | | | | |
| 16 | Weymouth | | | | | | | | | | | | | | | | | | | | | | | | | | |
| 16 | Windermere | | | | | | | | | | | | | | | | | | | | | | | | | | |
| HERITAGE COLLECTION | | | | | | | | | | | | | | | | | | | | | | | | | | | |
| 19 | Annabel | | | | | | | | | | | | | | | | | | | | | | | | | | |
| 19 | Dalton | | | | | | | | | | | | | | | | | | | | | | | | | | |
| 20 | Denbigh | | | | | | | | | | | | | | | | | | | | | | | | | | |
| 20 | Derry | | | | | | | | | | | | | | | | | | | | | | | | | | |
| 21 | Malham | | | | | | | | | | | | | | | | | | | | | | | | | | |
| 22 | Durham | | | | | | | | | | | | | | | | | | | | | | | | | | |
| 23 | Justine | | | | | | | | | | | | | | | | | | | | | | | | | | |
| 23 | Linden | | | | | | | | | | | | | | | | | | | | | | | | | | |
| 24 | Dublin | | | | | | | | | | | | | | | | | | | | | | | | | | |
| 24 | Matlock | | | | | | | | | | | | | | | | | | | | | | | | | | |
| 25 | Sophie | | | | | | | | | | | | | | | | | | | | | | | | | | |
| CLASSIC COLLECTION | | | | | | | | | | | | | | | | | | | | | | | | | | | |
| 27 | Caroline | | | | | | | | | | | | | | | | | | | | | | | | | | |
| 27 | Cotswold Rose | | | | | | | | | | | | | | | | | | | | | | | | | | |
| 28 | Sydney | | | | | | | | | | | | | | | | | | | | | | | | | | |
| 29 | James | | | | | | | | | | | | | | | | | | | | | | | | | | |
| 29 | Penny | | | | | | | | | | | | | | | | | | | | | | | | | | |
| 30 | Poppy | | | | | | | | | | | | | | | | | | | | | | | | | | |
| 30 | Plymton | | | | | | | | | | | | | | | | | | | | | | | | | | |
| 31 | Wilmslow | | | | | | | | | | | | | | | | | | | | | | | | | | |
| STOVE COLLECTION | | | | | | | | | | | | | | | | | | | | | | | | | | | |
| 33 | Barkston | | | | | | | | | | | | | | | | | | | | | | | | | | |
| 33 | Barlby | | | | | | | | | | | | | | | | | | | | | | | | | | |
| 34 | Beamish | | | | | | | | | | | | | | | | | | | | | | | | | | |
| 35 | Leicester | | | | | | | | | | | | | | | | | | | | | | | | | | |
| 35 | Lichfield | | | | | | | | | | | | | | | | | | | | | | | | | | |
| 36 | Plain Corbel | | | | | | | | | | | | | | | | | | | | | | | | | | |
| 36 | Gatsby | | | | | | | | | | | | | | | | | | | | | | | | | | |
| 37 | Blaydon | | | | | | | | | | | | | | | | | | | | | | | | | | |
| 38 | Montreal | | | | | | | | | | | | | | | | | | | | | | | | | | |
| 39 | Sutton | | | | | | | | | | | | | | | | | | | | | | | | | | |

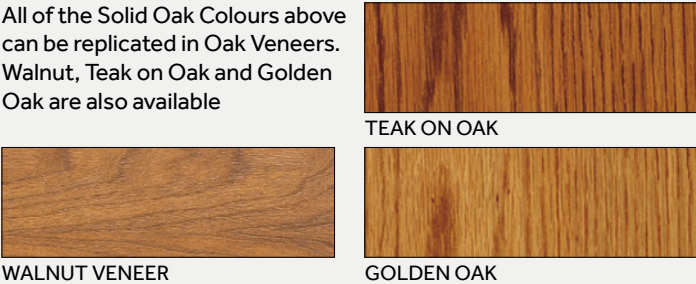
* Sutton and Barkston are not available in Dressed, Extremely Aged or Ancient finishes

SOLID OAK FINISHES



VENEER FINISHES

All of the Solid Oak Colours above can be replicated in Oak Veneers. Walnut, Teak on Oak and Golden Oak are also available



PINE FINISHES



PAINT FINISHES



TEXTURED OAK (Stove Collection Only)



01 PRESTIGE
COLLECTION



◀ LEFT
Charlotte finished in medium oak

| | METRIC mm | IMPERIAL inch |
|-----------------|--------------|------------------|
| Mantel | 1346 | 53 |
| Mantel Depth | 190 | 7 1/2 |
| Surround Height | 1150 | 45 1/4 |
| Opening Height | 889 | 35 |
| Opening Width | 889 | 35 |
| Width at Base | 1276 | 50 1/4 |
| Rebate | 28 | 1 1/8 |
| Removable To | 76 | 3 |



◀ LEFT
Emily finished in waxed oak

| | METRIC mm | IMPERIAL inch |
|-----------------|--------------|------------------|
| Mantel | 1295 | 51 |
| Mantel Depth | 191 | 7 1/2 |
| Surround Height | 1118 | 44 |
| Opening Height | 915 | 36 |
| Opening Width | 889 | 35 |
| Width at Base | 1200 | 47 1/4 |
| Rebate | 28 | 1 1/8 |
| Removable To | 76 | 3 |

EMMERDALE

| | METRIC mm | IMPERIAL inch |
|-----------------|--------------|------------------|
| Mantel | 1308 | 51 1/2 |
| Mantel Depth | 178 | 7 |
| Surround Height | 1158 | 45 5/8 |
| Opening Height | 889 | 35 |
| Opening Width | 889 | 35 |
| Width at Base | 1220 | 48 |
| Rebate | 28 | 1 1/8 |
| Removable To | 76 | 3 |

RIGHT
Emmerdale finished in white

BELOW
Emmerdale finished in light oak



HAREWOOD

LEFT
Harewood finished in medium oak

| | METRIC mm | IMPERIAL inch |
|-----------------|--------------|------------------|
| Mantel | 1320 | 52 |
| Mantel Depth | 200 | 8 |
| Surround Height | 1260 | 49 1/2 |
| Opening Height | 915 | 36 |
| Opening Width | 889 | 35 |
| Width at Base | 1188 | 46 3/4 |
| Rebate | 28 | 1 1/8 |
| Removable To | 76 | 3 |



JANINE

LEFT
Janine finished in waxed pippy oak

'Pippy oak' refers to a specific pattern formed by the knots in the oak. This is a naturally occurring feature and will vary from one surround to another.

| | METRIC mm | IMPERIAL inch |
|-----------------|--------------|------------------|
| Mantel | 1320 | 52 |
| Mantel Depth | 190 | 7 1/2 |
| Surround Height | 1150 | 45 1/4 |
| Opening Height | 889 | 35 |
| Opening Width | 889 | 35 |
| Width at Base | 1220 | 48 |
| Rebate | 28 | 1 1/8 |
| Removable To | 76 | 3 |



JENNIFER

► RIGHT
Jennifer finished in medium oak

Pictured with an electric stove - if used with a stove or gas appliance seek advice on whether slips / guards are required.

| | METRIC mm | IMPERIAL inch |
|-----------------|--------------|------------------|
| Mantel | 1397 | 55 |
| Mantel Depth | 228 | 9 |
| Surround Height | 1162 | 45 3/4 |
| Opening Height | 915 | 36 |
| Opening Width | 863 | 34 |
| Width at Base | 1282 | 50 1/2 |
| Rebate | 28 | 1 1/8 |
| Removable To | 76 | 3 |



OLIVIA

► RIGHT
Olivia finished in waxed oak with a Midnight back panel & hearth

| | METRIC mm | IMPERIAL inch |
|-----------------|--------------|------------------|
| Mantel | 1397 | 55 |
| Mantel Depth | 216 | 8 1/2 |
| Surround Height | 1162 | 45 3/4 |
| Opening Height | 915 | 36 |
| Opening Width | 915 | 36 |
| Width at Base | 1282 | 50 1/2 |
| Rebate | 28 | 1 1/8 |
| Removable To | 76 | 3 |



KENSINGTON

| | METRIC mm | IMPERIAL inch |
|-----------------|--------------|------------------|
| Mantel | 1308 | 51 1/2 |
| Mantel Depth | 190 | 7 1/2 |
| Surround Height | 1162 | 45 3/4 |
| Opening Height | 915 | 36 |
| Opening Width | 889 | 35 |
| Width at Base | 1238 | 48 3/4 |
| Rebate | 28 | 1 1/8 |
| Removable To | 76 | 3 |

▼ BELOW
Kensington finished in white



PALMA

| | METRIC mm | IMPERIAL inch |
|-----------------|--------------|------------------|
| Mantel | 1320 | 52 |
| Mantel Depth | 178 | 7 |
| Surround Height | 1155 | 45 1/2 |
| Opening Height | 915 | 36 |
| Opening Width | 889 | 35 |
| Width at Base | 1245 | 49 |
| Rebate | 28 | 1 1/8 |
| Removable | 76 | 3 |

▼ BELOW
Palma finished in antique white



KINGSTON



◀ LEFT
Kingston finished in white

| | METRIC mm | IMPERIAL inch |
|-----------------|--------------|------------------|
| Mantel | 1460 | 57 1/2 |
| Mantel Depth | 230 | 9 |
| Surround Height | 1232 | 48 1/2 |
| Opening Height | 915 | 36 |
| Opening Width | 915 | 36 |
| Width at Base | 1320 | 52 |
| Rebate | 28 | 1 1/8 |
| Removable To | 76 | 3 |

TONI



◀ LEFT
Toni finished in light/medium oak

| | METRIC mm | IMPERIAL inch |
|-----------------|--------------|------------------|
| Mantel | 1371 | 54 |
| Mantel Depth | 229 | 9 |
| Surround Height | 1168 | 46 |
| Opening Height | 915 | 36 |
| Opening Width | 889 | 35 |
| Width at Base | 1244 | 49 |
| Rebate | 28 | 1 1/8 |
| Removable To | 76 | 3 |

VECTRA

RIGHT
Vectra finished in white with a texture board back and hearth

| | METRIC mm | IMPERIAL inch |
|-----------------|--------------|------------------|
| Mantel | 1346 | 53 |
| Mantel Depth | 325 | 12 3/4 |
| Surround Height | 1110 | 43 3/4 |
| Opening Height | 915 | 36 |
| Opening Width | 915 | 36 |
| Width at Base | 1257 | 49 1/2 |
| Rebate | 28 | 1 1/8 |
| Removable To | 76 | 3 |



RICHMOND

| | METRIC mm | IMPERIAL inch |
|-----------------|--------------|------------------|
| Mantel | 1460 | 57 1/2 |
| Mantel Depth | 230 | 9 |
| Surround Height | 1232 | 48 1/2 |
| Opening Height | 915 | 36 |
| Opening Width | 915 | 36 |
| Width at Base | 1320 | 52 |
| Rebate | 28 | 1 1/8 |
| Removable To | 76 | 3 |

RIGHT
Richmond finished in white



PARIS

| | METRIC mm | IMPERIAL inch |
|-----------------|--------------|------------------|
| Mantel | 1333 | 52 1/2 |
| Mantel Depth | 184 | 7 1/4 |
| Surround Height | 1276 | 50 1/4 |
| Opening Height | 863 | 34 |
| Opening Width | 870 | 34 1/2 |
| Width at Base | 1220 | 48 |
| Rebate | 28 | 1 1/8 |
| Removable To | 76 | 3 |

LEFT
Paris finished in waxed oak

BELOW
Paris finished in antique white



WEYMOUTH

► RIGHT
Weymouth finished in white

| | METRIC mm | IMPERIAL inch |
|-----------------|--------------|--------------------------------|
| Mantel | 1346 | 53 |
| Mantel Depth | 203 | 8 |
| Surround Height | 1212 | 47 ³ / ₄ |
| Opening Height | 895 | 35 ¹ / ₄ |
| Opening Width | 895 | 35 ¹ / ₄ |
| Width at Base | 1226 | 48 ¹ / ₄ |
| Rebate | 28 | 1 ¹ / ₈ |
| Removable To | 76 | 3 |



WINDERMERE

► RIGHT
Windermere finished in light / medium oak

| | METRIC mm | IMPERIAL inch |
|-----------------|--------------|--------------------------------|
| Mantel | 1473 | 58 |
| Mantel Depth | 225 | 8 ⁷ / ₈ |
| Surround Height | 1194 | 47 |
| Opening Height | 915 | 36 |
| Opening Width | 889 | 35 |
| Width at Base | 1334 | 52 ¹ / ₂ |
| Rebate | 28 | 1 ¹ / ₈ |
| Removable To | 76 | 3 |



YOUR BESPOKE FIREPLACE

At Focus every fire surround we build is crafted by hand, so any specific requests, whether it is size, shape or colour, we are confident we can make your dream fireplace a reality.

Choose any surround style from our exclusive collections and we can bespoke it to your individual specification. Check our specification guide on Page 5 for more details and discuss your requirements with your local Focus Fireplaces retailer/stockist.



02 HERITAGE
COLLECTION



◀ LEFT
Annabel finished in antique white

| | METRIC mm | IMPERIAL inch |
|-----------------|--------------|------------------|
| Mantel | 1422 | 56 |
| Mantel Depth | 235 | 9 1/4 |
| Surround Height | 1143 | 45 |
| Opening Height | 915 | 36 |
| Opening Width | 915 | 36 |
| Width at Base | 1295 | 51 |
| Rebate | 28 | 1 1/8 |
| Removable To | 76 | 3 |



DALTON

◀ LEFT
Dalton finished in waxed oak

| | METRIC mm | IMPERIAL inch |
|-----------------|--------------|------------------|
| Mantel | 1194 | 47 |
| Mantel Depth | 162 | 6 3/8 |
| Surround Height | 1022 | 40 1/4 |
| Opening Height | 851* | 33 1/2* |
| Opening Width | 806 | 31 3/4 |
| Width at Base | 1086 | 42 3/4 |
| Rebate | 28 | 1 1/8 |

* To the highest point of the curve.
812mm / 32" to the lowest point.

DENBIGH



Add roses on top of legs to introduce a distinctive feature

RIGHT
Denbigh finished in light/medium oak

| | METRIC mm | IMPERIAL inch |
|-----------------|--------------|------------------|
| Mantel | 1345 | 53 |
| Mantel Depth | 153 | 6 |
| Surround Height | 1032 | 40 5/8 |
| Opening Height | 854 | 33 5/8* |
| Opening Width | 876 | 34 1/2 |
| Width at Base | 1238 | 48 3/4 |
| Rebate | 28 | 1 1/8 |

* To the highest point of the curve.



DERRY

RIGHT
Derry finished in white

| | METRIC mm | IMPERIAL inch |
|-----------------|--------------|------------------|
| Mantel | 1320 | 52 |
| Mantel Depth | 165 | 6 1/2 |
| Surround Height | 1149 | 45 1/4 |
| Opening Height | 863 | 34 |
| Opening Width | 800 | 31 1/2 |
| Width at Base | 1238 | 48 3/4 |
| Rebate | 28 | 1 1/8 |
| Removable To | 76 | 3 |



MALHAM

| | METRIC mm | IMPERIAL inch |
|-----------------|--------------|------------------|
| Mantel | 1365 | 53 3/4 |
| Mantel Depth | 194 | 7 5/8 |
| Surround Height | 1090 | 42 7/8 |
| Opening Height | 889 | 35* |
| Opening Width | 889 | 35 |
| Width at Base | 1219 | 48 |
| Rebate | 28 | 1 1/8 |

* To the highest point of the curve.



▲ ABOVE
Malham finished in waxed oak featuring a Midnight back and hearth

DURHAM

| | METRIC mm | IMPERIAL inch |
|-----------------|--------------|------------------|
| Mantel | 1295 | 51 |
| Mantel Depth | 140 | 5 1/2 |
| Surround Height | 1054 | 41 1/2 |
| Opening Height | 915 | 36 |
| Opening Width | 915 | 36 |
| Width at Base | 1194 | 47 |
| Rebate | 76 | up to 3 |



▲ ABOVE
Durham finished in light / medium oak
featuring a Midnight back and hearth

JUSTINE



◀ LEFT
Justine finished in light oak

| | METRIC mm | IMPERIAL inch |
|-----------------|--------------|------------------|
| Mantel | 1282 | 50 1/2 |
| Mantel Depth | 165 | 6 1/2 |
| Surround Height | 1111 | 43 3/4 |
| Opening Height | 889 | 35 |
| Opening Width | 889 | 35 |
| Width at Base | 1181 | 46 1/2 |
| Rebate | 28 | 1 1/8 |
| Removable To | 76 | 3 |

LINDEN



◀ Left
Linden finished in antique white

| | METRIC mm | IMPERIAL inch |
|-----------------|--------------|------------------|
| Mantel | 1270 | 50 |
| Mantel Depth | 190 | 7 1/2 |
| Surround Height | 1098 | 43 1/4 |
| Opening Height | 889 | 35 |
| Opening Width | 889 | 35 |
| Width at Base | 1194 | 47 |
| Rebate | 28 | 1 1/8 |
| Removable To | 76 | 3 |

DUBLIN

RIGHT
Dublin finished in white with a light oak top

| | METRIC mm | IMPERIAL inch |
|-----------------|--------------|------------------|
| Mantel | 1320 | 52 |
| Mantel Depth | 165 | 6 1/2 |
| Surround Height | 1124 | 44 1/4 |
| Opening Height | 889 | 35 |
| Opening Width | 860 | 33 7/8 |
| Width at Base | 1220 | 48 |
| Rebate | 28 | 1 1/8 |



MATLOCK

RIGHT
Matlock finished in light oak

| | METRIC mm | IMPERIAL inch |
|-----------------|--------------|------------------|
| Mantel | 1187 | 46 3/4 |
| Mantel depth | 190 | 7 1/2 |
| Surround height | 1035 | 40 3/4 |
| Opening height | 825 | 32 1/4 |
| Opening width | 762 | 30 |
| Width at base | 1092 | 43 |
| Rebate | 28 | 1 1/8 |



SOPHIE

| | METRIC mm | IMPERIAL inch |
|-----------------|--------------|------------------|
| Mantel | 1346 | 53 |
| Mantel Depth | 203 | 8 |
| Surround Height | 1175 | 46 1/4 |
| Opening Height | 915 | 36 |
| Opening Width | 915 | 36 |
| Width at Base | 1270 | 50 |
| Rebate | 28 | 1 1/8 |
| Removable To | 76 | 3 |



▲ ABOVE
Sophie finished in antique white
with a Midnight back and hearth

03 CLASSIC COLLECTION

CAROLINE



◀ LEFT
Caroline finished in light oak veneer

| | METRIC mm | IMPERIAL inch |
|-----------------|--------------|------------------|
| Mantel | 1295 | 51 |
| Mantel Depth | 197 | 7 ¾ |
| Surround Height | 1105 | 43 ½ |
| Opening Height | 889 | 35 |
| Opening Width | 889 | 35 |
| Width at Base | 1185 | 46 ⅝ |
| Rebate | 28 | 1 ⅛ |
| Removable To | 76 | 3 |

COTSWOLD ROSE



◀ LEFT
Costwold Rose finished in white

| | METRIC mm | IMPERIAL inch |
|-----------------|--------------|------------------|
| Mantel | 1283 | 50 ¾ |
| Mantel Depth | 200 | 7 ⅞ |
| Surround Height | 1082 | 42 ⅝ |
| Opening Height | 889 | 35 |
| Opening Width | 889 | 35 |
| Width at Base | 1180 | 46 ½ |
| Rebate | 28 | 1 ⅛ |
| Removable To | 76 | 3 |

SYDNEY

| | METRIC mm | IMPERIAL inch |
|-----------------|--------------|------------------|
| Surround Depth | 115 | 4 1/2 |
| Surround Height | 1066 | 42 |
| Opening Height | 889 | 35 |
| Opening Width | 889 | 35 |
| Width at Base | 1245 | 49 |
| Rebate | 28 | 1 1/8 |
| Removable To | 76 | 3 |

► Sydney finished in light / medium oak veneer



JAMES



◀ LEFT
James finished in white

| | METRIC mm | IMPERIAL inch |
|-----------------|--------------|------------------|
| Mantel | 1210 | 47 5/8 |
| Mantel Depth | 153 | 6 |
| Surround Height | 1097 | 43 1/4 |
| Opening Height | 889 | 35 |
| Opening Width | 889 | 35 |
| Width at Base | 1156 | 45 1/2 |
| Rebate | 28 | 1 1/8 |

PENNY



◀ LEFT
Penny finished in white with a
Venetian grey back and hearth

| | METRIC mm | IMPERIAL inch |
|-----------------|--------------|------------------|
| Mantel | 1219 | 48 |
| Mantel Depth | 197 | 7 3/4 |
| Surround Height | 1054 | 41 1/2 |
| Opening Height | 876 | 34 1/2 |
| Opening Width | 863 | 34 |
| Width at Base | 1143 | 45 |
| Rebate | 28 | 1 1/8 |
| Removable To | 76 | 3 |

POPPY

► RIGHT
Poppy finished in light oak with a Bianca back and hearth

| | METRIC mm | IMPERIAL inch |
|-----------------|--------------|------------------|
| Mantel | 1219 | 48 |
| Mantel Depth | 197 | 7 ¾ |
| Surround Height | 1054 | 41 ½ |
| Opening Height | 876 | 34 ½ |
| Opening Width | 863 | 34 |
| Width at Base | 1143 | 45 |
| Rebate | 28 | 1 ⅛ |
| Removable To | 76 | 3 |

PLYMTON

► RIGHT
Plymton finished in white

| | METRIC mm | IMPERIAL inch |
|-----------------|--------------|------------------|
| Mantel | 1320 | 52 |
| Mantel Depth | 197 | 7 ¾ |
| Surround Height | 1031 | 40 ⅝ |
| Opening Height | 838 | 33* |
| Opening Width | 889 | 35 |
| Width at Base | 1220 | 48 |
| Rebate | 28 | 1 ⅛ |
| Removable To | 76 | 3 |

* To the highest point of the curve.



WILMSLOW

| | METRIC mm | IMPERIAL inch |
|-----------------|--------------|------------------|
| Mantel | 1257 | 49 ½ |
| Mantel Depth | 190 | 7 ½ |
| Surround Height | 1168 | 46 |
| Opening Height | 889 | 35 |
| Opening Width | 889 | 35 |
| Width at Base | 1194 | 47 |
| Rebate | 28 | 1 ⅛ |
| Removable To | 76 | 3 |



▲ ABOVE
Wilmslow finished in white with a Midnight back and hearth

04 STOVE
COLLECTION

BARKSTON



LEFT
Aged oak Barkston finished in medium wax

| | METRIC mm | IMPERIAL inch |
|-----------------|--------------|------------------|
| Mantel | 1320 | 52 |
| Mantel Depth | 127 | 5 |
| Surround Height | 1085 | 42 3/4 |
| Opening Height | 915 | 36 |
| Opening Width | 915 | 36 |
| Width at Base | 1168 | 46 |

BARLBY

*A version of the Barlby is also available
in our Non-combustible range. Further
Details can be found on the website or
in the Beams & Shelves Brochure*



LEFT
Rustic oak Barlby finished in light / medium wax

| | METRIC mm | IMPERIAL inch |
|-----------------|--------------|------------------|
| Mantel | 1295 | 51 |
| Mantel Depth | 140 | 5 1/2 |
| Surround Height | 1054 | 41 1/2 |
| Opening Height | 915 | 36 |
| Opening Width | 915 | 36 |
| Width at Base | 1193 | 47 |
| Rebate | 50* | 2* |

** Rebate up to 2" (50mm) Deep & 2" (50mm) into the leg
and top can be added*

BEAMISH

BELOW
Aged oak Beamish finished in medium wax

| | METRIC mm | IMPERIAL inch |
|-----------------|--------------|------------------|
| Mantel | 1295 | 51 |
| Mantel Depth | 140 | 5 1/2 |
| Surround Height | 1054 | 41 1/2 |
| Opening Height | 915 | 36 |
| Opening Width | 915 | 36 |
| Width at Base | 1193 | 47 |
| Rebate | 0 | 0 |

The Beamish is supplied in three pieces.
Rebate no deeper than 3" deep. Up to 2" into leg and top for slips can be added. Optional Easy-Fix bracket for mantel and key-hole fixings for the legs.

A version of the Beamish is also available in our Non-combustible range. Further Details can be found on the website or in the Beams & Shelves Brochure



LEICESTER

Left
Leicester finished in white

| | METRIC mm | IMPERIAL inch |
|-----------------|--------------|------------------|
| Mantel | 1270 | 50 |
| Mantel depth | 110 | 4 1/4 |
| Surround height | 1130 | 44 1/2 |
| Opening height | 915 | 36 |
| Opening width | 889 | 35 |
| Width at base | 1182 | 46 1/2 |
| Rebate | 0 | 0 |

Rebate can be added 3" / 1 1/8"



LICHFIELD

Left
Lichfield finished in white

| | METRIC mm | IMPERIAL inch |
|-----------------|--------------|------------------|
| Mantel | 1320 | 52 |
| Mantel depth | 127 | 5 |
| Surround height | 1150 | 45 3/4 |
| Opening height | 915 | 36 |
| Opening width | 889 | 35 |
| Width at base | 1220 | 48 |
| Rebate | 0 | 0 |

Rebate can be added 3" / 1 1/8"



PLAIN CORBEL

RIGHT
Plain Corbel finished in antique waxed pine

| | METRIC mm | IMPERIAL inch |
|-----------------|--------------|------------------|
| Mantel | 1295 | 51 |
| Mantel Depth | 228 | 9 |
| Surround Height | 1133 | 44 5/8 |
| Opening Height | 915 | 36 |
| Opening Width | 889 | 35 |
| Width at Base | 1206 | 47 1/2 |
| Rebate | 28 | 1 1/8 |
| Removable To | 76 | 3 |

GATSBY

RIGHT
Aged oak Gatsby finished in dark wax

| | METRIC mm | IMPERIAL inch |
|-----------------|--------------|------------------|
| Mantel | 1371 | 54 |
| Mantel Depth | 140 | 5 1/2 |
| Surround Height | 1104 | 43 1/2 |
| Opening Height | 915 | 36 |
| Opening Width | 915 | 36 |
| Width at Base | 1270 | 50 |
| Rebate | 0 | 0 |

The Gatsby is supplied in three pieces.
Rebate no deeper than 1" deep. Up to 2" into leg and top for slips can be added. Optional Easy-Fix bracket for mantel and key-hole fixings for the legs.



BLAYDON



ABOVE
Aged oak Blaydon finished in medium wax

| | METRIC mm | IMPERIAL inch |
|-----------------|--------------|------------------|
| Mantel | 1295 | 51 |
| Mantel Depth | 140 | 5 1/2 |
| Surround Height | 985 | 38 3/4 |
| Opening Height | 915 | 36 |
| Opening Width | 915 | 36 |
| Width at Base | 1193 | 47 |
| Rebate | 0 | 0 |

MONTREAL



| | METRIC mm | IMPERIAL inch |
|-----------------|--------------|------------------|
| Mantel | 1370 | 54 |
| Mantel Depth | 228 | 9 |
| Surround Height | 1162 | 45 3/4 |
| Opening Height | 889 | 35 |
| Opening Width | 889 | 35 |
| Width at Base | 1270 | 50 |
| Rebate | 28 | 1 1/8 |
| Removable To | 76 | 3 |

▲ ABOVE
Montreal finished in medium waxed oak

SUTTON

| | METRIC mm | IMPERIAL inch |
|-----------------|--------------|------------------|
| Mantel | 1220 | 48 |
| Mantel Depth | 135 | 5 3/8 |
| Surround Height | 1080 | 42 1/2 |
| Opening Height | 889 | 35 |
| Opening Width | 889 | 35 |
| Width at Base | 1220 | 48 |
| Rebate | 76 | 3 |

◀ LEFT
Aged oak Sutton
finished in medium wax

Up to 2" into leg and top for
slips can be added.



FOCUS ON THE RIGHT ELECTRIC SUITE FOR YOU

Whether you are looking for a more traditional fire surround to complement an inset electric fire, or you are seeking a suite to house a modern panoramic electric fire, Focus can deliver the right solution for you.

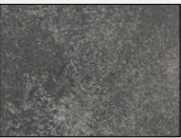
FINISH GUIDE

Choose from our extensive palette of Paint and veneer finishes, use our Colour-Matching Service or simply have a medium density fibreboard electric suite painted in a prime white finish ready for you to finish yourself at home.

PREMIUM PAINT

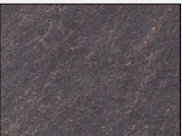


CONCRETE



SLATE

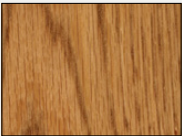
TEXTURE BOARD



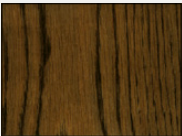
VENEER



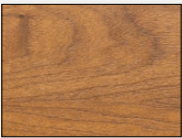
WAXED OAK



LIGHT / MEDIUM OAK



MEDIUM / DARK OAK

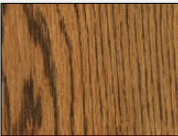


WALNUT VENEER

PAINT



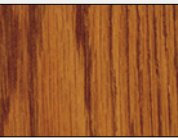
LIGHT OAK



MEDIUM OAK



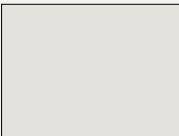
GOLDEN OAK



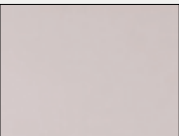
TEAK ON OAK



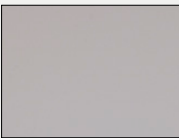
WHITE



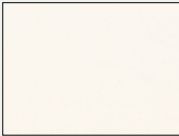
PARCHMENT



OATMEAL



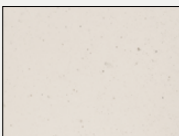
WARM GREY



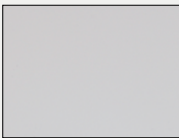
ANTIQUE WHITE



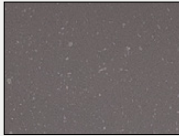
SOFT CREAM



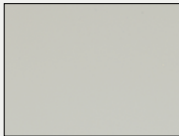
LIMESTONE



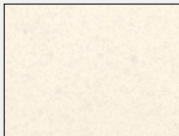
MID GREY



PEARL GREY



VENETIAN GREY



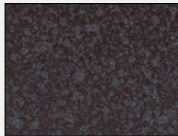
BIANCA



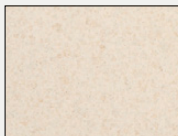
ICE WHITE



STEEL GREY



MIDNIGHT



SPICE



BLUE BLACK

FINISH GUIDE

INSET ELECTRIC COLLECTION

| | Standard Paint Finishes on MDF | Premium Colour Matched Paint Finishes on MDF | Solid Oak | Painted MDF Surround with Oak Mantel | Veneer* |
|--------------|--------------------------------|--|-----------|--------------------------------------|---------|
| 43 Camberley | ✓ | ✓ | | | ✓ |
| 43 Harrow | ✓ | ✓ | | | ✓ |
| 44 Danielle | ✓ | ✓ | | | ✓ |
| 45 Monaco | ✓ | ✓ | | ✓ | ✓ |
| 45 Vienna | ✓ | ✓ | | | ✓ |

PANORAMIC ELECTRIC SUITES

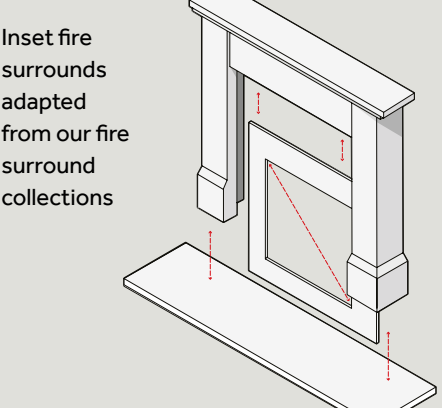
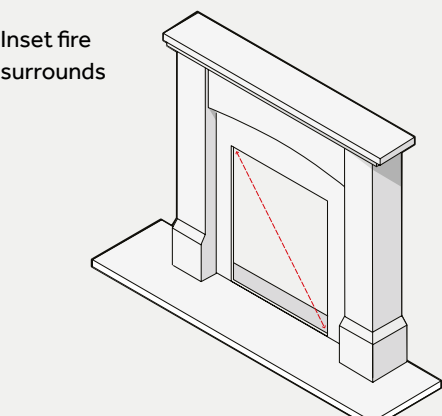
| | | | | | |
|-------------|---|---|---|--|---|
| 47 Colorado | ✓ | ✓ | | | ✓ |
| 47 Texas | ✓ | ✓ | ✓ | | ✓ |
| 48 Arizona | ✓ | ✓ | | | ✓ |
| 49 Montana | ✓ | ✓ | | | ✓ |
| 49 Nevada | ✓ | ✓ | | | ✓ |
| 50 Chicago | ✓ | ✓ | | | ✓ |
| 51 Houston | ✓ | ✓ | | | ✓ |
| 51 Madison | ✓ | ✓ | | | ✓ |
| 52 Vista | ✓ | ✓ | | | ✓ |
| 52 Vermont | ✓ | ✓ | | | ✓ |
| 52 Shelburn | ✓ | ✓ | | | ✓ |
| 53 Vermont | ✓ | ✓ | | | ✓ |

* Full veneer / part veneer finish variations on some Panoramic Suites

SUITES FOR INSET ELECTRIC FIRES

Our Inset Collection features a selection of suites designed specifically for inset fires. Complete with a back and hearth they can be provided with a cut-out to suit a traditional inset fire or a square/rectangular inset fire.

If this selection does not have a suite to suit your requirements, then any of the surrounds from our Prestige, Heritage and Classic Collections can be adapted to create an electric suite by simply specifying a size and adding a back and hearth.



MODERN FIRES, YOUR RULES

Our Panoramic Collection features a number of suites that have been specifically designed to adapt to the various one/two and three sided fires that are becoming more prevalent in modern home design.

Whilst they are all illustrated with leading fires from manufacturers including Stovax Gazco, British Fires, Charlton and Jenrick, Onyx Avanti and BFM Europe, each can be modified to suit fires from other manufacturers (some exceptions apply – see individual products for more details).

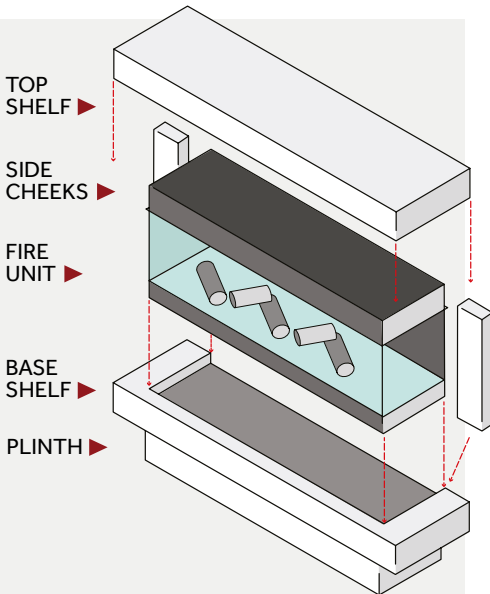
The various components are explained by the following graphic, and the base and top sections are available as separate components. Ultimately the size of the fire will dictate what can be achieved, so speak to your retailer/stockist for more information.

AVAILABLE TO FIT MULTIPLE SIZES

900mm 1100mm
1300mm 1500mm

Most of our electric suites are available in multiple sizes*, to meet the requirements of all major modern electric fireplace manufacturers. The suites correspond to the size of the selected fire - ask your retailer/stockist for more information.

*The suites designed for the Gazco eStudio and Onyx Fusion fires are specific to these particular fires.



05 INSET
ELECTRIC
SUITE
COLLECTION

CAMBERLEY

◀ Left
Camberley finished in grey pearl

▼ Below
Camberley finished in oatmeal



| | METRIC mm | IMPERIAL inch |
|----------------|--------------|------------------|
| Mantel | 1067 | 42 |
| Mantel depth | 254 | 10 |
| Overall height | 882 | 34 ¾ |
| Opening height | 673 | 26 ½ |
| Opening width | 660 | 26 |
| Rebate | 127 | 5 |
| Hearth Width | 1067 | 42 |
| Hearth Depth | 355 | 14 |



HARROW

◀ Left
Harrow finished in Venetian grey

| | METRIC mm | IMPERIAL inch |
|----------------|--------------|------------------|
| Mantel | 1143 | 45 |
| Mantel depth | 222 | 8 ¾ |
| Overall height | 957 | 37 ⅝ |
| Opening height | 647 | 25 ½ |
| Opening width | 597 | 23 ½ |
| Rebate | 127 | 5 |
| Hearth Width | 1143 | 45 |
| Hearth Depth | 355 | 14 |



DANIELLE

RIGHT
Danielle finished in white
with a concrete back panel

BELOW
Danielle finished in white
with a Midnight back panel

| | METRIC mm | IMPERIAL inch |
|----------------|--------------|------------------|
| Mantel | 1250 | 49¼ |
| Mantel depth | 295 | 11½ |
| Overall height | 1090 | 42¾ |
| Hearth Width | 1250 | 49¼ |
| Hearth Depth | 380 | 15 |



MONACO

Left
Monaco finished in white with an oak
top and concrete back panel and spacer
frame for the fire

| | METRIC mm | IMPERIAL inch |
|----------------|--------------|------------------|
| Mantel | 1220 | 48 |
| Mantel depth | 254 | 10 |
| Overall height | 1111 | 43¾ |
| Opening height | 787 | 31 |
| Opening width | 686 | 27 |
| Hearth width | 1220 | 48 |
| Hearth depth | 381 | 15 |



VIENNA

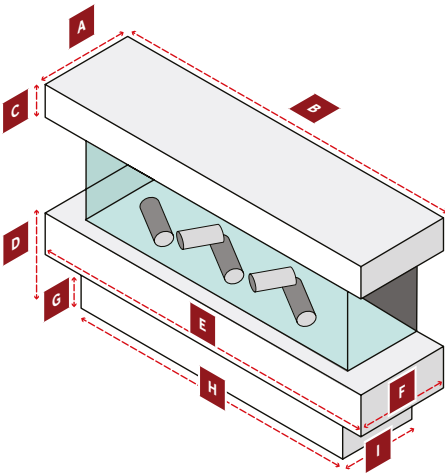
Left
Vienna finished in dove grey
(bespoke paint finish)

| | METRIC mm | IMPERIAL inch |
|----------------|--------------|------------------|
| Mantel | 1193 | 47 |
| Mantel depth | 216 | 8½ |
| Overall height | 1022 | 40¼ |
| Opening height | 711 | 28 |
| Opening width | 685 | 27 |
| Hearth width | 1193 | 47 |
| Hearth depth | 355 | 14 |
| Rebate | 102 | 4 |



06 PANORAMIC
ELECTRIC
SUITE
COLLECTION

COLORADO



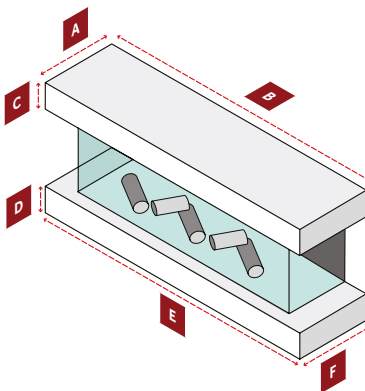
Left
Colorado finished in white with texture board detailing.

| | | |
|---|---------------------|--------|
| A | Top Shelf Depth | 340mm |
| B | Top Shelf Width | 1450mm |
| C | Top Shelf Height | 150mm |
| D | Overall Base Height | 410mm |
| E | Base Width | 1650mm |
| F | Base Depth | 400mm |
| G | Plinth Height | 110mm |
| H | Plinth Width | 1540mm |
| I | Plinth Depth | 350mm |

Dimensions correspond to the fire illustrated. Please request details for alternative sized fires from your retailer / stockist.

Illustrated with the Charlton and Jenrick i1250e deep fire.

TEXAS



Left
Texas finished base unit in light oak veneer with the top shelf finished in white.

| | | |
|---|------------------|--------|
| A | Top Shelf Depth | 326mm |
| B | Top Shelf Width | 1334mm |
| C | Top Shelf Height | 150mm |
| D | Base Height | 150mm |
| E | Base Width | 1500mm |
| F | Base Depth | 380mm |

Dimensions correspond to the fire illustrated. Please request details for alternative sized fires from your retailer / stockist.

Illustrated with British Fires New Forest 1200 fire .

ARIZONA



Arizona finished in walnut veneer with green shelf (see below) and black powder coated legs. Illustrated with the Gazco eReflex 150RW fire with integrated lighting kit.

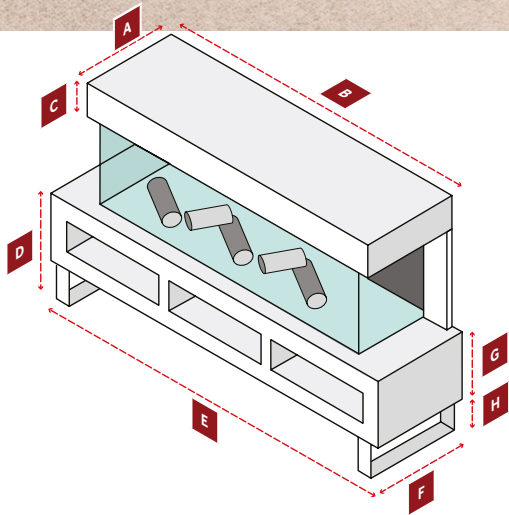


▲ **INSET**
Optional lighting kit changes shelf illumination

▼ **BELOW**
Green shelf



▼ **BELOW**
Corner of oak veneer option with matching leg



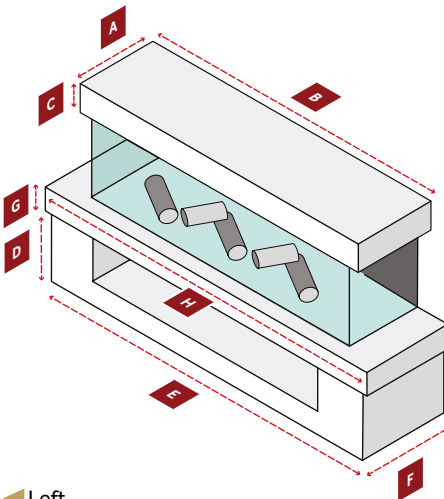
| | | |
|---|---------------------|---------|
| A | Top Shelf Depth | 330 mm |
| B | Top Shelf Width | 1700 mm |
| C | Top Shelf Height | 150mm |
| D | Overall Base Height | 500 mm |
| E | Base Width | 1830 mm |
| F | Base Depth | 400mm |
| G | Base Height | 350mm |
| H | Leg Height | 150mm |

Dimensions correspond to the fire illustrated. Please request details for alternative sized fires from your retailer / stockist.

MONTANA



Illustrated with the Onyx Avanti 150 RW fire



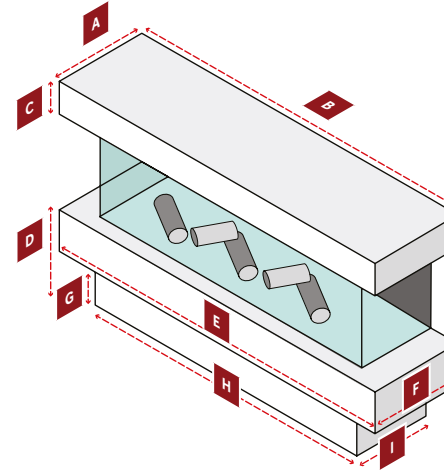
◀ **Left**
Montana base unit finished in soft cream white in light oak veneer with top shelf in soft cream

| | | |
|---|-------------------|--------|
| A | Top Shelf Depth | 380mm |
| B | Top Shelf Width | 1700mm |
| C | Top Shelf Height | 150mm |
| D | Base Height | 400mm |
| E | Base Width | 1760mm |
| F | Base Depth | 400mm |
| G | Base Shelf Height | 100mm |
| H | Base Shelf Width | 1800mm |

NEVADA



Illustrated with the Onyx Avanti 150 RW fire



◀ **Left**
Nevada base finished in white and Midnight with a white top shelf

| | | |
|---|---------------------|--------|
| A | Top Shelf Depth | 380mm |
| B | Top Shelf Width | 1700mm |
| C | Top Shelf Height | 150mm |
| D | Overall Base Height | 315mm |
| E | Base Width | 1800mm |
| F | Base Depth | 420mm |
| G | Plinth Height | 115mm |
| H | Plinth Width | 1700mm |
| I | Plinth Depth | 350mm |

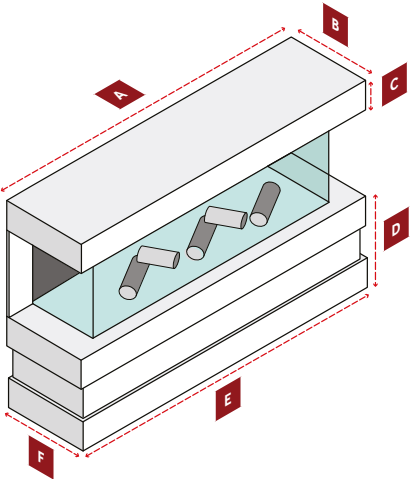
Dimensions correspond to the fire illustrated. Please request details for alternative sized fires from your retailer / stockist.

CHICAGO



Illustrated with the Celsi DLX 1600 fire with real loose log set

Above Chicago finished in blue black with waxed oak inlay and side cheeks



| | | |
|---|---------------------|--------|
| A | Top Shelf Width | 1850mm |
| B | Top Shelf Depth | 360mm |
| C | Top Shelf Height | 150mm |
| D | Overall Base Height | 430mm |
| E | Base Width | 1850mm |
| F | Base Depth | 400mm |

Dimensions correspond to the fire illustrated. Please request details for alternative sized fires from your retailer / stockist.



Above Chicago finished in blue black with slate inlay and side cheeks

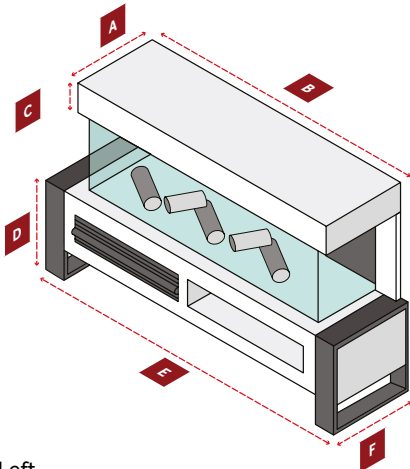


Above Chicago finished in blue black with reeded panel inlay in white and blue black side cheeks

MADISON



Illustrated with the Onyx Fusion 150RW Fire. This suite is only available for this fire due to the proportions of the legs



Left
Madison finished in teak veneer with black powder coated legs and painted black detail. Featuring optional magnetic reeded panel hatch cover in black paint

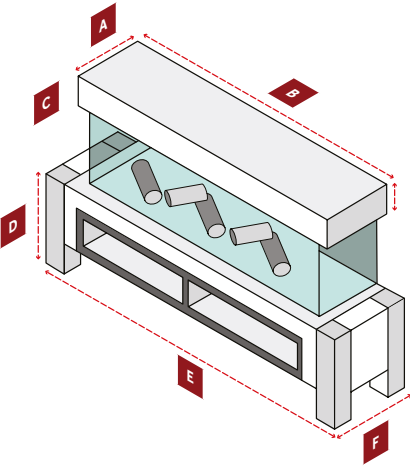
| | | |
|---|------------------|--------|
| A | Top Shelf Depth | 300mm |
| B | Top Shelf Width | 1800mm |
| C | Top Shelf Height | 120mm |
| D | Base Height | 400mm |
| E | Base Width | 1800mm |
| F | Base Depth | 350 mm |

Dimensions correspond to the fire illustrated. Please request details for alternative sized fires from your retailer / stockist.

HOUSTON



Illustrated with the Onyx Avanti 110 RW fire and optional integrated lighting kit. Pictured with a chimney breast (not available) but a top shelf can be provided.



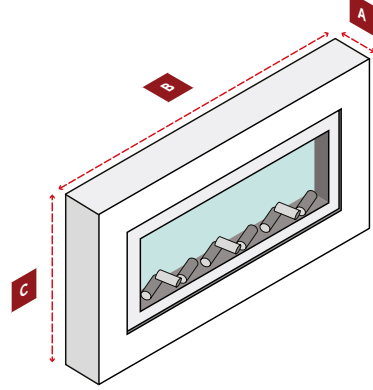
Left
Houston base finished in soft cream with a waxed oak leg and black shelf detail

| | | |
|---|---------------------|--------|
| A | Top Shelf Depth | 380mm |
| B | Top Shelf Width | 1300mm |
| C | Top Shelf Height | 150mm |
| D | Overall Base Height | 500mm |
| E | Base Width | 1500mm |
| F | Base Depth | 430mm |

Dimensions correspond to the fire illustrated. Please request details for alternative sized fires from your retailer / stockist.

VISTA

For the Gazco eStudio 85R/105R



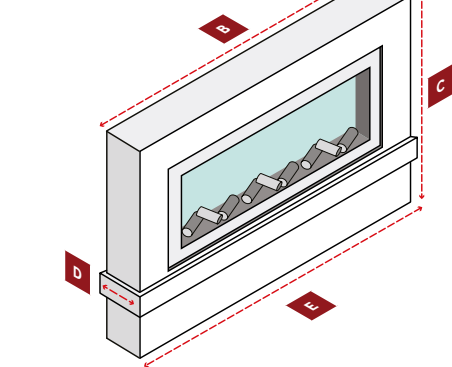
| | | |
|---|--------|----------------|
| A | Depth | 220mm |
| B | Width | 1200 / 1400 mm |
| C | Height | 695mm |

Vista 85 in oatmeal and concrete



VERMONT

For the Gazco eStudio 85R/105R



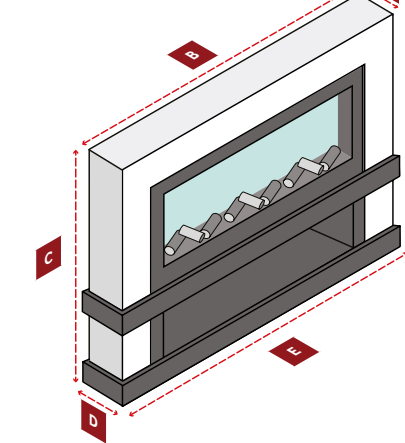
| | | |
|---|-------------|---------------|
| A | Depth | 220mm |
| B | Width | 1255 / 1455mm |
| C | Height | 850mm |
| D | Shelf Depth | 270mm |
| E | Shelf Width | 1370 / 1570mm |

Vermont 85 in oatmeal and concrete with optional integrated lighting kit



SHELburn

For the Gazco eStudio 85R/105R



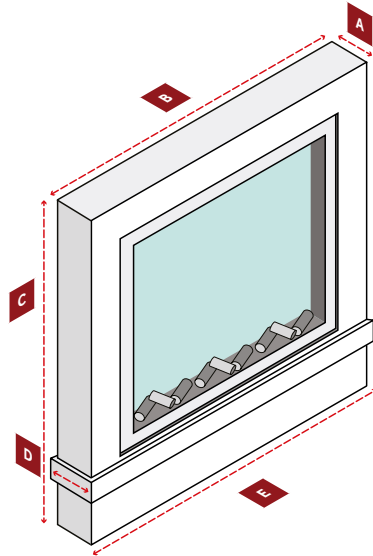
| | | |
|---|-------------|---------------|
| A | Depth | 220mm |
| B | Width | 1255 / 1455mm |
| C | Height | 920mm |
| D | Shelf Depth | 270mm |
| E | Shelf Width | 1370 / 1570mm |

Shelburn 85 in Midnight and White with optional intergrated lighting kit



VERMONT 60R

For the Gazco eStudio 60R



| | | |
|---|-------------|--------|
| A | Depth | 300mm |
| B | Width | 1020mm |
| C | Height | 1120mm |
| D | Shelf Depth | 350mm |
| E | Shelf Width | 1140mm |



Vermont 60 in light oak veneer and white

FOCUS ON THE DETAIL

INSET FIRES

If you are keen to emulate the style that you have seen throughout this brochure, some of the inset electric fires that are pictured with the Fire Surrounds are available to order from Focus.



FIXING KITS

Your installation team will assist in the specification of the correct fitting system for your surround/suite.

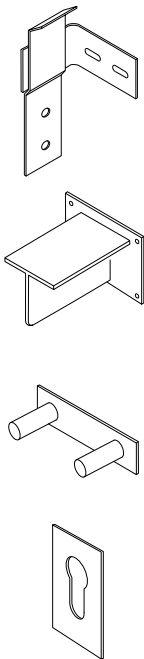
We have a number of solutions to help with the correct installation including:

CONCEALED FIXING BRACKETS – a two piece system (each bracket) that allows for a fully concealed installation and allows for simple removal.

'T' BRACKETS – designed to help carry the weight of selected 'floating' shelves and panoramic suites, to be used in conjunction with the electric fire hanging kit supplied with your selected panoramic fire (where required).

EASY-FIX BRACKETS – where specified some of Stove surrounds are supplied with one of our Easy-Fix brackets to firmly secure the mantel to the wall (and enable removal for (re) decoration).

KEY-HOLE BRACKETS – standard fitting for our 3-piece stove surrounds. Can be used with the optional easy-fix bracket. (Key-hole bracket for legs).



LIGHTING KITS

Selected surrounds and electric suites can accommodate optional downlights and/or strip lights.

DOWNLIGHTS – requiring an additional power source (to the fire) the downlight kits are great for adding ambient light to your Fireplace. Independently switched, they can be installed at the time of manufacture (selected models only).

INTEGRATED LIGHT STRIPS – Light kits that can be plugged directly into the Gazco and Onyx fire ranges (where available) enabling the remote control from the fire to operate the lighting system.

STAND ALONE LED LIGHT STRIPS – requiring an additional power source (to the fire) the light strip kits are operated with their own remote control (supplied).



BEAMS & SHELVES FOR STOVES

We also have a full range of Oak & Non-Combustible beams & shelves - ask your retailer / stockist for a copy of our latest brochure.





FOCUS FIREPLACES LIMITED

Unit 27 The Bull Commercial Centre, Stockton-on-Forest, York YO32 9LE

Tel: 01904 400109

email: sales@focusfireplaces.co.uk

www.focusfireplaces.co.uk



Focus Fireplaces are continually updating and improving their products. We reserve the right to alter designs, dimensions and specifications of our fire surrounds and suites without notice. All sizes are approximate.

Brochure colours may vary from the actual product due to the photographic and printing processes and the variations in grain of solid timbers.

© Focus Fireplaces Manufacturing 2024 - Issue 0124